

TREEIB®

THE SET OF TOOLS for watering established/mature/big trees

TREEIB® is a set of tools (a method and watering bags) for the noninvasive watering of established trees on a large scale. We are a family business distributing Tregator® bags in Europe. We were searching for a watering solution for established trees because our trees were stressed by drought in 2016-21. We hadn't found any, so we developed one.

TREEIB®, a patent-pending method of watering and watering bags in volumes of 396 and 114 gallons, newly made also of upcycled material, provide deep watering with setup and filling in minutes. The bags are almost indestructible, with army-grade material and several security layers. And if anything happens, we supply a repair set to fix it directly in the box. We can print whatever you can imagine on the bag, even photographs, which will last forever. So make your branding stunning to shine in public space!

UNOBTRUSIVE
Bags drain in
8-24 hours.
Application only
4-5 times
per year.
For the other 360 days, the bags serve your other trees,
or you lend or rent the bags to your neighbors.

#made in EU

#patent pending

#water conservation



TREEIB®

IN THE **CORRECT**
WAY

makes watering big trees feasible

ON A LARGE SCALE | AS A BUSINESS SERVICE | FOR CLIMATE CHANGE ADAPTATION AND MITIGATION

THE WATERING BAGS

TREEIB®



CAPACITY: 1500 l / 396 US gal

WATER RELEASE TIME: 8-12 hours

LENGTH: 600 cm / 19.7 ft

WIDTH: 110 cm / 3.6 ft

HEIGHT WHEN FULL: 30 cm / 11.8 in

SHAPE: 1/4 circle 7 m in diameter

FILLING OPENING: 15 cm / 6 in

USE: on a plane, on a slope

PARKS
GARDENS
PUBLIC SPACE
CONSTRUCTION SITES
LARGE TREE
TRANSPLANTS



TREEIB®



VARIABLE SOLUTION FOR WATERING TREES IN PAVED AREAS

CAPACITY: 430 l / 114 US gal

WATER RELEASE TIME:

GRASS SURFACE: 8-9 hours

PAVED SURFACE: 20-22 hours

SHAPE: rectangle

FILLING OPENING: 15 cm / 6 in

LENGTH: 204 cm / 6.7 ft

WIDTH: 105 cm / 3.4 ft

HEIGHT WHEN FULL: 30 cm / 11.8 in

STREETS
PAVEMENTS
PAVED AREAS
PARKING LOTS
CONSTRUCTION SITES



SCHEDULE A
1 TO 1 MEETING
WITH THE INVENTOR



REPAIRABLE

CUSTOM PRINT



UPCYCLED SUPER-SAFE

UNIQUE PRODUCT CODE IN DATABASE

METAL EYELETS FOR ANCHORING

HEAVY DUTY MATERIAL CERTIFIED

EN 71-3 TOY SAFETY

24/7 GPS GUARDING

FILLING CYLINDER LOCK WITH SHOCK ALARM (OPTIONAL)

THE METHOD

#strategic watering

#backed with science

THE RIGHT PLACE

WHERE WE WANT THE ROOTS TO BE

On and beyond the canopy dripline

The extent and shape of the root system should be close to the natural shape of the root system of the taxon.

THE RIGHT TIME

WHENEVER THE SUBSTRATE TEMPERATURE IS ABOVE

6°C/42°F (humid continental climate zone)

An adequate amount of water must be accessible to the tree with possible irregularity to prevent die off the feeder roots.

THE RIGHT FREQUENCY

SOIL GAS EXCHANGE IS POSSIBLE AND SHALLOW ROOTING IS PREVENTED

4-5 times per year

Vertical soil hydraulics is restored, as we cannot replace all the water the tree needs. The goal: maximum drought resistance, an extensive root system, and healthy rapid growth the following season.

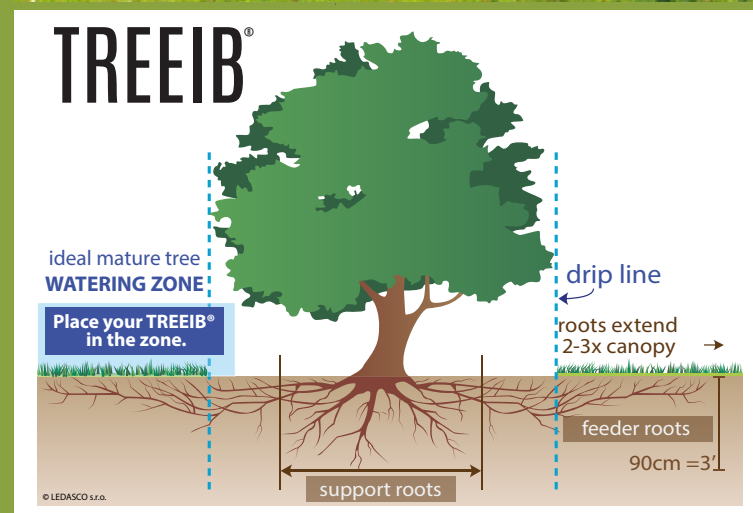
THE RIGHT DOSE

ENOUGH TO REPLACE TRANSPIRATION VOLUME FOR A MINIMUM OF 10 DAYS

800-9,000 liters/211-2,400 US gal.

A sufficient volume of water must reach a minimum depth of 60 cm / 2 ft.

- IMPROVES SAFETY
- SUPPORTS GROWTH
- INCREASES VITALITY
- IMPROVES HEALTH
- PROMOTES RESISTANCE TO PESTS
- APPLIES SOIL AMENDMENTS
- PROTECTS ON CONSTRUCTION SITES
- REMOVES SALT CONTAMINATION
- MITIGATES CLIMATE CHANGE
- BRINGS RAIN
- COOLS CITIES
- MANAGES STORM WATER



SHOCKING RESULTS

NO
FERTILIZERS
APPLIED

2018



2021

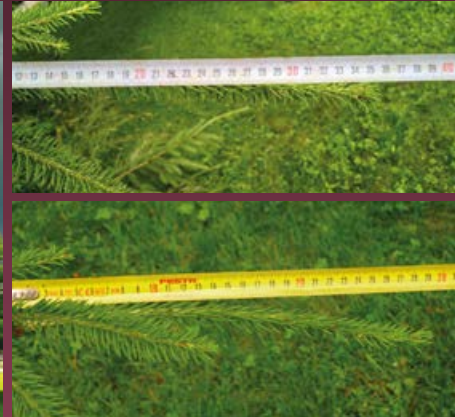


RE-GROWING NEEDLES



After watering in July, branches with dieback on tips got a new generation of needles, sprouting from adventive buds, in August. It adds more leaf area for aesthetic appearance and the production of ecosystem services, particularly in the following seasons.

RAPID SAFE GROWTH



Removal will likely be necessary for fewer trees, and ecosystem services production will be conserved and maximized. The Norway spruce sequestered 5 times more carbon than the control specimens in the same environment. The tree ring width reaches 14.9 mm / 0.59 inches in 2021.

ADD A NEW SERVICE
TO YOUR PORTFOLIO

YOU

- GENERATE ADDITIONAL PROFIT
- BRING ADDED VALUE TO YOUR CUSTOMERS
- GROW VALUE OF YOUR COMPANY
- HELP THE ENVIRONMENT

WITH

- LOW INVESTMENT
- NO COMPETITION
- NO SKILLED WORKFORCE NEEDED

STRATEGIC WATERING BIG TREES

WATER | HELP | FILL | LEASE

START NOW!



TREEIB.COM

CONTACT:

BRIAN S. PIPER

HEAD OF GLOBAL
BUSINESS DEVELOPMENT

+1 716 989-6163
+420 603-471-475

USA@TREEIB.COM